

# 1991 Viking 43 Convertible

Boat Type: Sport Fishing

Address: Destin, FL, US

Price: \$109,000



## OVERVIEW

This clean, Captain maintained 43 Viking Convertible is priced to sell! Powered by economical 485 horsepower twin 6-71 Detroit diesels and she has new 20 Kw Onan generator with low hours. The 43's spacious cockpit stands ready for landing big-game catches complete with outriggers. The salon has plenty of room for family and friends whether fishing or cruising. The L-shaped lounge (with convertible bed), breakfast bar and a step down galley which features full refrigerator and freezer. Forward to port is guest stateroom with upper and lower bunks. Also to port in enclosed cabinetry is stackable washer and dryer. To starboard is what you want in a head, large shower, mirrored vanity and ample storage. Forward again you'll find a luxurious master stateroom with a walk around queen sized bed, two full length cedar lined teak lockers and a private entry to head.

## SPECIFICATIONS

### Basic Information

|                                    |                |                   |               |
|------------------------------------|----------------|-------------------|---------------|
| Manufacturer:                      | Viking         | Vessel Name:      | Time Out      |
| Model:                             | 43 Convertible | Boat Type:        | Sport Fishing |
| Year:                              | 1991           | Hull Material:    | Fiberglass    |
| Category:                          | Power          | Hull Type:        |               |
| Condition:                         | Used           | Hull Color:       |               |
| Location:                          | Destin, FL, US | Designer:         |               |
| Available for sale in U.S. waters: | Yes            | Flag of Registry: |               |

### Dimensions & Weight

|         |                     |                   |   |
|---------|---------------------|-------------------|---|
| Length: | 43 ft - 13.11 meter | Draft - max:      | - |
| LOA:    | 43 ft - 13.11 meter | Bridge Clearance: | - |
| Beam:   | -                   | Dry Weight:       | - |

### Engine

|               |                |                   |                                  |
|---------------|----------------|-------------------|----------------------------------|
| Make:         | Detroit Diesel | Engine Type:      | Inboard                          |
| Model:        | JT6-71         | Drive Type:       |                                  |
| Engine(s):    | 2              | Fuel Type:        | Diesel                           |
| Hours:        | 3000           | Horsepower:       | 485 (Individual), 970 (combined) |
| Cruise Speed: | -              | Max Speed:        | -                                |
| Range:        | -              | Joystick Control: | No                               |

### Tank Capacities

|                   |                         |               |                        |
|-------------------|-------------------------|---------------|------------------------|
| Fuel Tank:        | 525 gallons - 1 tank(s) | Holding Tank: | 40 gallons - 1 tank(s) |
| Fresh Water Tank: | 115 gallons - 1 tank(s) |               |                        |

### Accommodations

|                 |   |              |   |
|-----------------|---|--------------|---|
| Total Cabins:   | - | Crew Cabins: | 1 |
| Total Berths:   | - | Crew Berths: | 1 |
| Total Sleeps:   | 1 | Crew Sleeps: | 1 |
| Total Heads:    | - | Crew Heads:  | 1 |
| Captains Cabin: | - |              |   |

## DESCRIPTIONS

### Accommodations

### Additional Specs, Equipment and Information:

**Boat Name**

Time Out

**Dimensions**

LOA: 43 ft 0 in

Beam: 15 ft 3 in

Maximum Draft: 4 ft 3 in

Displacement: 38,000 lbs

Bridge Clearance: 15 ft 10 in

Headroom: 6 ft 4 in

Deadrise: 15.5° at Transom

**Engines**

Engine Brand: Detroit's

Engine(s) Total Power: 970 HP

Engine Model: JT 6-71

Engine Type: Inboard

Drive Type: Direct Drive

Propeller: 3 blade propeller

Year Built: 1991

Engine Hours: 3000

Trim Tabs

**Tanks**

Fresh Water Tanks: (115 Gallons)

Fuel Tanks: (525 Gallons)

Holding Tanks: (40 Gallons)

**Electrical**

New Onan 20KW Generator

Battery Charger

50 Amp dockside service

**Electronic's & Helm**

5' Danforth compass

Furuno FCV-582L Fish Finder

Northstar GPS.Loran 800

ICOM VHF IC-M120

Simrad AP25 Autopilot

Datamarine Dart 2490

Kenwood Stereo/DVD

Sony TV

**Accommodations**

The 43 boast the largest Master with Queen Island bed stateroom and the most spacious Head and seperate shower in her class. Warm and comfortable interior with expansive salon with L-Lounge (converts to sleep 2) Galley step down to starboard with full size refrigerator/Freezer. 2 Burner Electric Cook Top with Microwave Oven.

Central Vac

Washer/Dryer

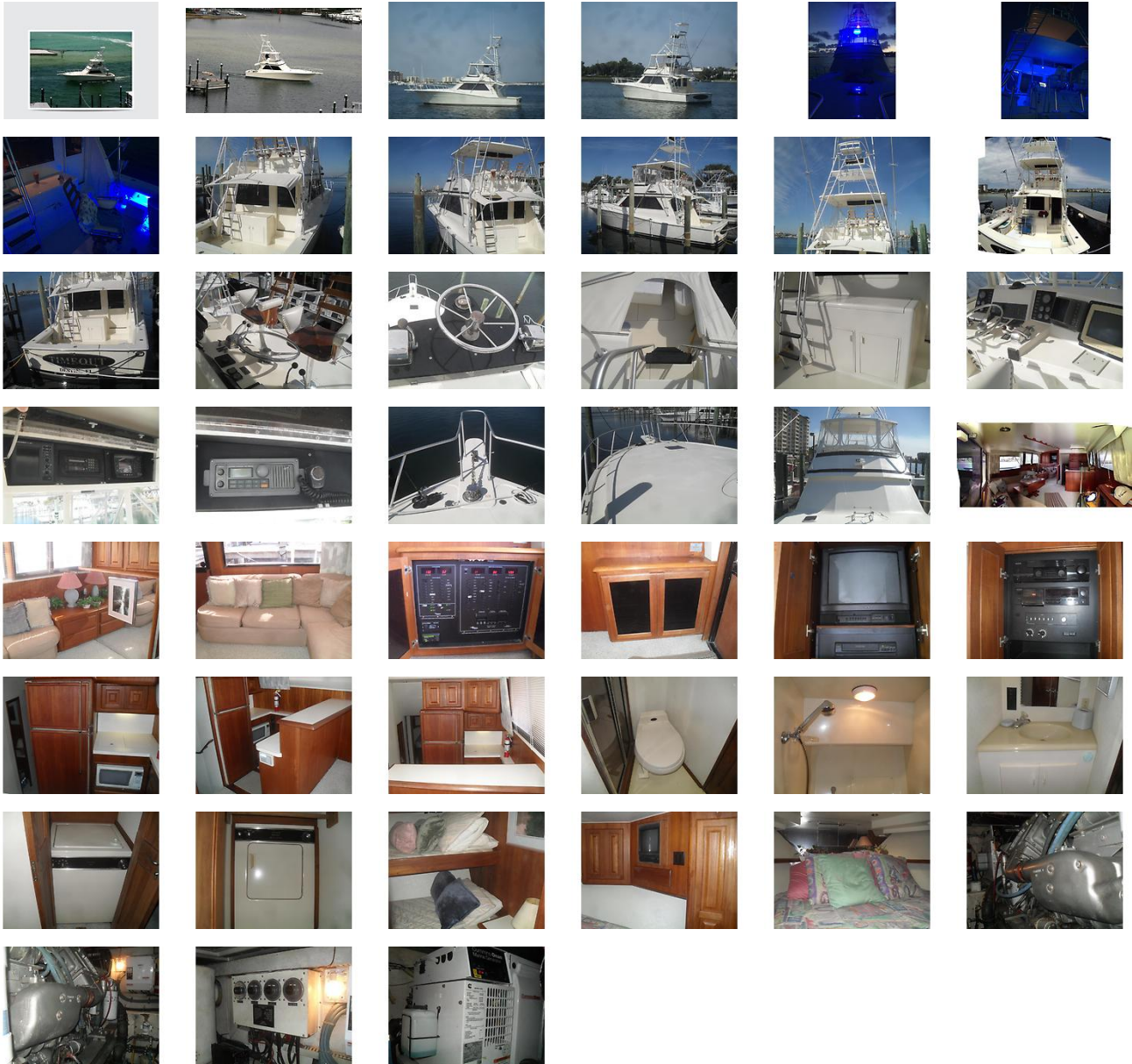
**New Boat Updates**

- Generator - recalled coil and computer board replaced
- New Electronics - All SIMRAD, NSS 12 inch touch screen with 4G radar, side scanners
- LumiTech LED lighting in cockpit and bridge, 3 color choices (red, white or blue)
- LED lighted control switches on bridge
- Fluorescent and LED engine lighting
- Upgraded LED navigation lighting
- Starter rebuild on port engine
- Water pump on starboard engine
- Gunnel pads in cockpit and tower
- Custom built in deck fish box with macerator
- Custom built rack for 220 quart cooler on bow
- Deck freezer
- 80 gallon live bait well
- Salt water wash down pump
- Bilge pumps throughout
- Vacuum pump toilet
- Fishing rod storage closet
- AC pump, Air handler unit and AC control panel
- BOSE marine speakers in bridge
- Eisenglass most panels replaced
- Captain chairs
- Mahogany Rybovich fighting chair
- Cabin Television with 12 inch woofer
- All engine hoses replaced
- Engine coolant system recently flushed with barnacle buster
- Grounding wires replaced
- 250 ft of anchor rope

**Disclaimer**

The Company offers the details of this vessel in good faith but cannot guarantee or warrant the accuracy of this information nor warrant the condition of the vessel. A buyer should instruct his agents, or his surveyors, to investigate such details as the buyer desires validated. This vessel is offered subject to prior sale, price change, or withdrawal without notice.

# GALLERY



# LOCATION MAP





**MASTER ADMIN**

**Great Southern Yacht Company**  
3997 Commons Drive West, Suite A  
Destin, FL, US  
Office: 850-424-5344  
Mobile: 910-239-9344  
[info@greatsouthernyachts.com](mailto:info@greatsouthernyachts.com)

---