

2004 Sea Ray 560 Sedan Bridge

Boat Type: Motor Yacht

Address: Destin, FL, US

Price: \$359,900



OVERVIEW

Immaculately Maintained

Maintained by an experienced Yachtsman; this 560 Sedan Bridge has the desirable Mann 1050 HP upgraded engine package and a long list of upgrades to include :

- ***New Electronics***
- ***New (2016) HVAC Systems Including Tubing Runs and Pumps***
- ***New Air Condition Units***
- ***New (2016) Batteries Replaced***
- ***New (2016) TNT rebuild kit for Hydraulic Swim Platform***

- ***New (2017) Hydraulic Steering Ram***
- ***Recent Complete Exterior Detail***
- ***Onan 21.5 KW Generator***
- ***Recent Generator Service***
- ***All Engine Services Up To Date With Records***
- ***Service Records and 2017 Survey Available This 56' Sedan Bridge with stunning features makes an exceptional vessel on all who steps upon her decks. This well kept fresh brackish water stored boat offer a bright open feeling of stunning space and luxurious accommodations. The three staterooms, two heads and a roomy climate control bridge gives you and your guests plenty of room to experience your water ventures in comfort. The owner has meticulously maintained, updated the electronics, air conditioning systems, batteries and bottom painted. Engines and generator service is up to date.***

SPECIFICATIONS

Basic Information

Manufacturer:	Sea Ray	Vessel Name:	My Jeannie
Model:	560 Sedan Bridge	Boat Type:	Motor Yacht
Year:	2004	Hull Material:	Fiberglass
Category:	Power	Hull Type:	
Condition:	Used	Hull Color:	
Location:	Destin, FL, US	Designer:	
Available for sale in U.S. waters:	Yes	Flag of Registry:	

Dimensions & Weight

Length:	56 ft - 17.07 meter	Draft - max:	4 ft 6 in - 1.37 meter
LOA:	58 ft 6 in - 17.83 meter	Bridge Clearance:	-
Beam:	16 ft - 4.88 meter	Dry Weight:	50000 ft - 15240 meter

Engine

Make:		Engine Type:	Inboard
Model:	2840LE403	Drive Type:	
Engine(s):	2	Fuel Type:	Diesel
Hours:	1350	Horsepower:	1050 (Individual), 2100 (combined)
Cruise Speed:	35 MPH	Max Speed:	43 MPH
Range:	-	Joystick Control:	No

Battery solenoid switches

Main distribution-AC/DC

DC main breaker

Glendinning cablemaster shore power

Transformers

Electronics & Control Systems

Major electronics update in 2012 including 2 E120's, radar & pilot modules & Flir system

New satellite TV system 2015

RayMarine RL 80c+ 10.4" LCD color radar/plotter

RayMarine ST 7001 autopilot

Interphase color twinscope w/depth sounder

Sea ray Navigator 12.1" chartplotter w/sunlight viewable touch screen

Dual VHF radios

IPOD docking station w/bridge surround sound

Satellite radio

EPIRB

Bow thruster

Compass

Instrument panels

Shift and throttle control

ACR spotlight

Wood accent steering wheel

Hydraulic steering

Tilt wheel

Digital LCD system monitor

Tanks

Fuel: 800

Fresh Water: 200

Holding: 68

Galley

Upper & Lower Cabinets

2-Sub Zero Freezer (1 with Icemaker)

Kenyon three Burner Stove

Trash Receptacle

Pull out sink faucet

Water Purifier

Drawers with Cutlery Inserts

Lazy Susan in Lower Cabinet

Glass & Dish Storage with Wine Rack

Black Tile Flooring

Coffeemaker (spacemaker)

Accommodations

There are three staterooms and two heads on this vessel , the master has a queen size bed, privacy door, cedar lockers, Bose speakers, Gunwale Cabinets, in-floor storage, 15" flat screen with LCD TV/ DVD Combo w/SAT & DVR, Vanity , and great storage.

The master head has private door, tile flooring, Vacuflush head, adjustable shower, medicine cabinet and vanity.

The VIP stateroom has a full size bed with below storage, cedar hanging locker, skylight, in floor storage, 13" flat screen DVD combo, vanity and additional cabinets.

The Port Stateroom has upper and lower bunks with storage, cedar locker, skylight, upper cabinet, floor storage, 13" TV and washer and dryer combo with below drawer.

The guest head shower has privacy door, tile flooring, Vacuflush head, adjustable shower and cabinet with vanity.

The Salon offers a relax sofa with storage below seats, pull out bed, 20" flat screen TV, central vac system and entertainment center. This includes stereo /cd/ Sat TV/Mounted Sat phone/Ipod docking station and storage.

Bridge

Bridge a/c

Hardtop

Ice maker

Wet bar

Clarion AM/FM single CD/Sat/6 disc changer

Bridge table

Indirect lighting

Refrigerator

Aft bench seating

Wet Bar w/Sink, Removable Trash Receptacle & Storage

U - Shaped Seating

Deck

Snap in carpet

Cabin entry door

Transom door

Indirect lighting

Deck access steps

Side panel: Port and Starboard

Aft bench seating with storage

Stereo Speakers

Extras

Central Vacuum

Upgraded Door Handles (swan)

Life Raft

Bridge Air

Underwater lights

4 exterior docking lights

Safety matting on steps and gunnels

Satellite phone

Custom canvas cover

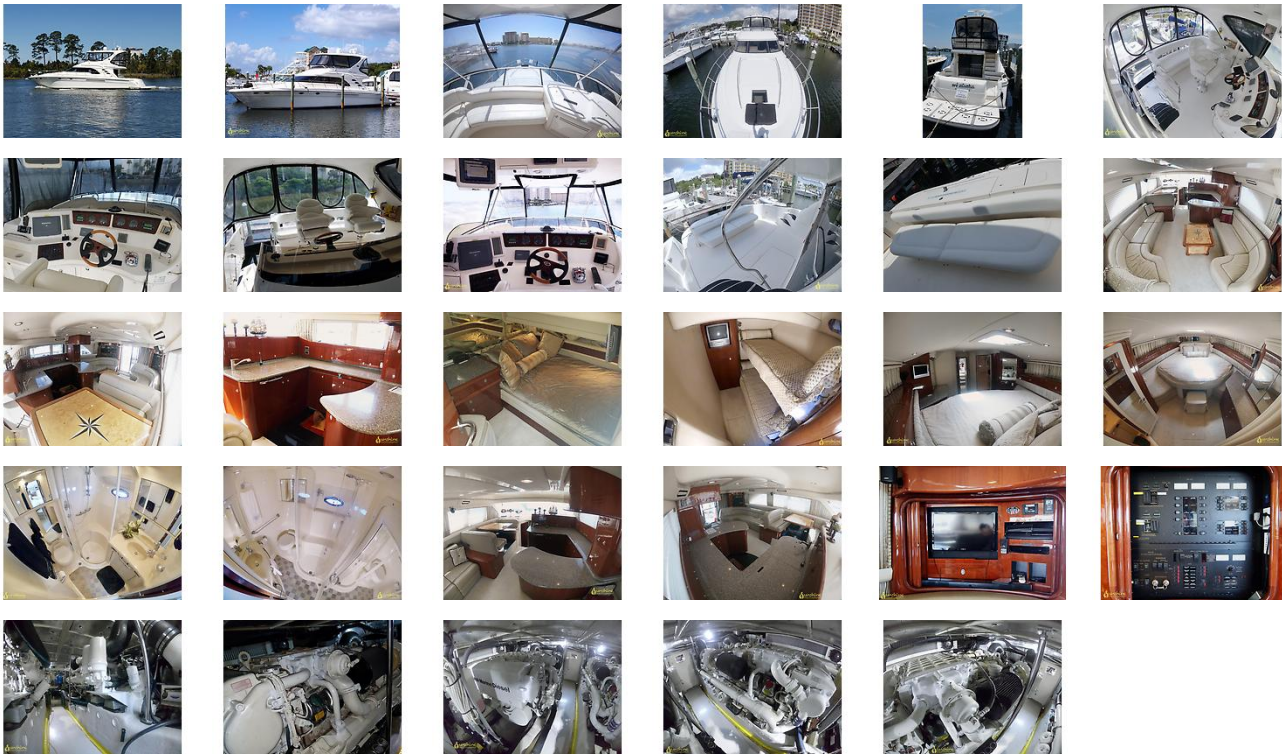
StataGlass bridge enclosure

Owner safe

GSY

The Company offers the details of this vessel in good faith but cannot guarantee or warrant the accuracy of this information nor warrant the condition of the vessel. A buyer should instruct his agents, or his surveyors, to investigate such details as the buyer desires validated. This vessel is offered subject to prior sale, price change, or withdrawal without notice.

GALLERY



LOCATION MAP



MASTER ADMIN
Great Southern Yacht Company
 3997 Commons Drive West, Suite A
 Destin, FL, US
 Office: 850-424-5344
 Mobile: 910-239-9344
info@greatsouthernyachts.com